

Appendix A. Removing Lymph Nodes for CWD Testing Submission

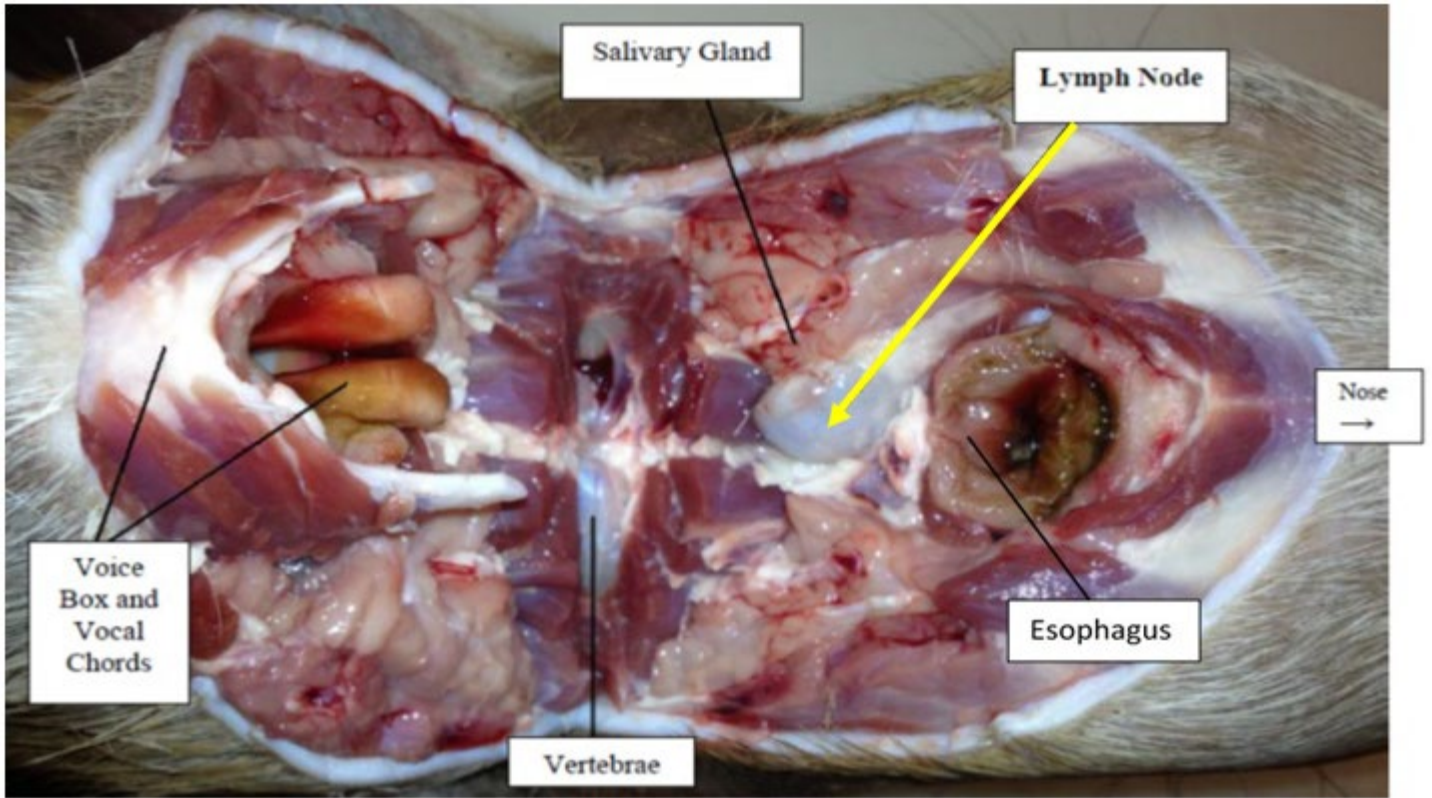


Step 1. Locate the larynx approximately where the neck bends.



Step 2. Make a U-shaped cut across the neck toward each ear. Your incision should be just behind the jawbone.

Step 3. Grasp the larynx and cut back toward you exposing the esophagus opening shown below. The lymph nodes will sit in a pocket to the lower left and lower right of the esophagus. Grasp each node with forceps and cut away at surrounding tissue. Try to remove both nodes as intact as possible.



Proper Tissue: Medial Retropharyngeal Lymph Nodes



Lymph nodes can come in many different sizes and colors, but always look bean shaped and sit in pockets near the center of the throat. The nodes will be firm and retain their shape when gently pressed against a hard surface.

Please note that if tissue other than medial retropharyngeal lymph nodes are received, a test cannot be performed, and a refund will not be offered. However, a credit can be applied to the client account for future testing. If you are ever unsure that you are collecting the correct tissue, please refer to the above photos, use the videos listed in the references section, you can cut out that section of the throat shown in Step 3, or you may send the entire head at additional cost.